

Water-Reducible High Gloss Alkyd Formulation for General Industrial Use

with Borchi® Performance Additives

HAPS-free

High-performance formulation for improved adhesion, corrosion resistance, and reverse impact compared to benchmark formulations

| General Industrial Paint Formula | | | |
|---|-------------------|-----------------|----------------------|
| Material | Function | Supplier | Formulation (Weight) |
| Deionized Water | Solvent | N/A | 5.05 |
| Borchi® Burst DF 300 | Defoamer | Milliken | 0.11 |
| Borchi® Gen 1252 | Dispersant | Milliken | 0.60 |
| Kronos 2310 | Titanium Dioxide | Kronos | 20.92 |
| High speed disperse to 7+ Hegman | | | |
| Charge to letdown tank | | | |
| Polychem 7775-EB-70 | Resin | OPC Polymers | 27.89 |
| Butyl Cellosolve | Solvent | DOW | 1.49 |
| Triethylamine | Amine | Sigma-Aldrich | 1.34 |
| Deionized Water | Solvent | N/A | 41.17 |
| Add grind paste to letdown | | | |
| Premix next four items, then add slowly, incompatibility will occur if not premixed | | | |
| Butyl Cellosolve | Solvent | DOW | 0.75 |
| 10% Cobalt Hydro-Cure® IV | Drier | Milliken | 0.15 |
| 5% Calcium Hex-Cem® | Drier | Milliken | 0.29 |
| Borchers® Dry 4012 aqua US | Drier | Milliken | 0.24 |
| Total | | | 100.00 |

Borchi® Performance Additives

Borchi® Burst DF 300:

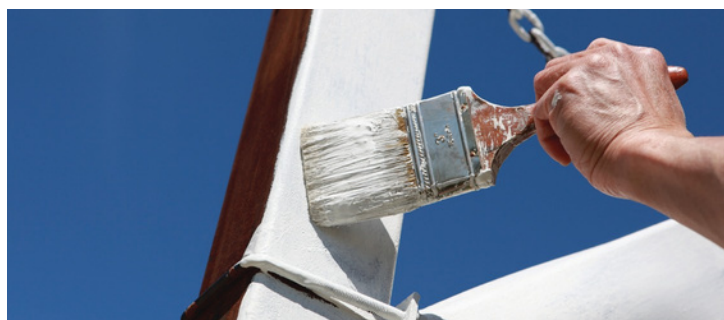
- ✓ VOC- and silicone-free
- Foam control agent and defoamer

Borchi® Gen 1252:

- ✓ 100% active, VOC- and APEO-free
- Wetting and dispersing agent

Formula Specifications

- **Lb/gal:** 10.05
- **VOC (g/L):** 336
- **Viscosity:** 64 ± 3 KU
- **PVC:** 22.07%
- **NVV:** 27.27%
- **pH:** 8.3-8.8



Water-Reducible High Gloss Alkyd Formulation for General Industrial Use

with Borch[®] Performance Additives

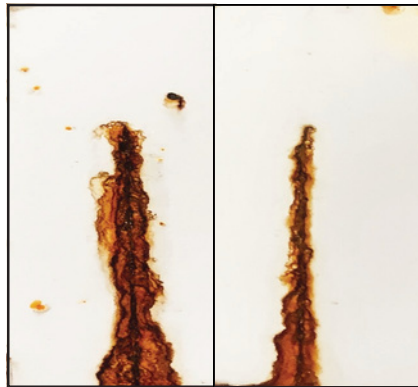
 HAPS-free

Improved Corrosion Resistance

ASTM B117 Q-Fog Salt Spray

Benchmark Formula

Optimized Formula

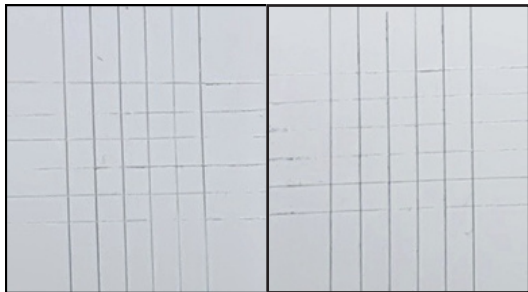


6 mil WFT, R-36 Cold Rolled Steel Panel, 7-day cure, 336 hours, 3" Line Scribe

Optimized Adhesion

Scotch 600 Tape

Permacel Tape



ASTMD 3359 Class: 5B

ASTMD 3359 Class: 5B

6 mil WFT, R-36 Cold Rolled Steel Panel, 7-day cure

Excellent Reverse Impact

Benchmark Formula

Optimized Formula

| | | |
|-----------------|---|---|
| 144 inch-pounds |  |  |
| 120 inch-pounds |  |  |
| 60 inch-pounds |  |  |
| 20 inch-pounds |  |  |
| 4 inch-pounds |  |  |

6 mil WFT, R-36 Cold Rolled Steel Panel, 7-day cure, 4-lb weight

Order your sample at:
www.borchers.com/contact

PLEASE NOTE: As each customer's use of our product may be different, information we provide, including without limitation, recommendations, test results, samples, care/labeling/processing instructions or marketing advice, is provided in good faith but without warranty and without accepting any responsibility/liability. Each customer must test and be responsible for its own specific use, further processing, labeling, marketing, etc. All sales are exclusively subject to our standard terms of sale posted at www.milliken.com/terms (all additional/different terms are rejected) unless explicitly agreed otherwise in a signed writing. Borch[®] is a trademark of Borchers Americas. OPC775EB70-103123

Milliken[™]