

Automotive Interior Adhesive Formulation for Better Rheological Performance

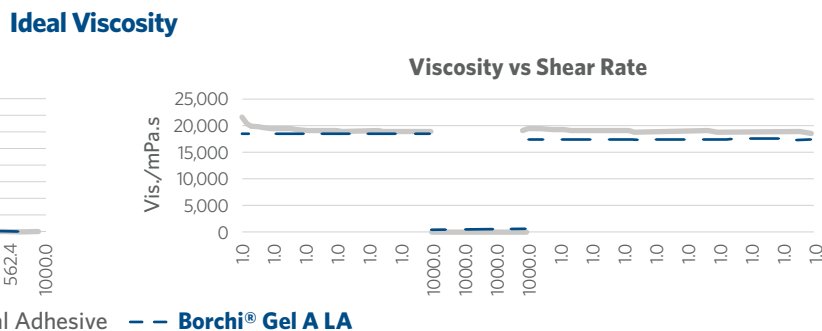
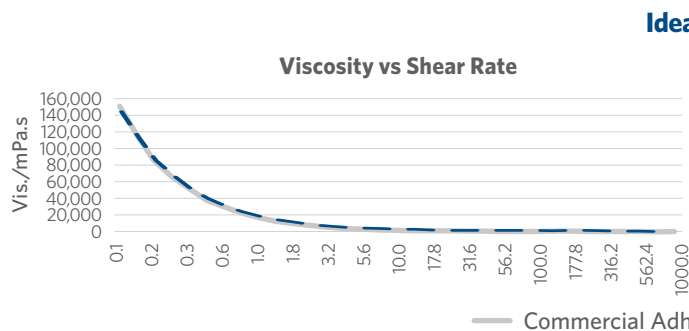
with **Borchi® Gel A LA**

Thickener for the Low Shear Range APEO- and tin-free

Easy incorporation, good compatibility with excellent thickening efficiency, and improved storage stability



Adhesive Formulation			
Material	Function	Supplier	Dosage
Dispercoll® U 56	Resin	Covestro	90.00
DI Water	Solvent	Milliken lab	10.00
AMP 95	Neutralizer	Dow Chemical	0.05
Borchi® Gel A LA	Rheology Additive	Milliken	2.00
Total			102.05



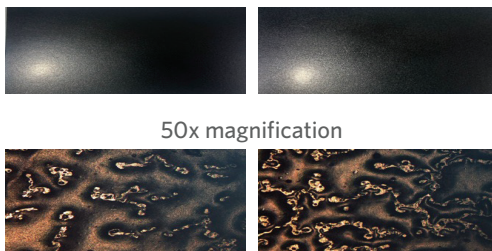
Better Storage Stability



Commercial Adhesive

with **Borchi® Gel A LA**

Reduced Spray Shots



Commercial Adhesive

with **Borchi® Gel A LA**



For more information, please reach us at [borchers.com/contact](https://www.borchers.com/contact)

PLEASE NOTE: As each customer's use of our product may be different, information we provide, including without limitation, recommendations, test results, samples, care/labeling/processing instructions or marketing advice, is provided in good faith but without warranty and without accepting any responsibility/liability. Each customer must test and be responsible for its own specific use, further processing, labeling, marketing, etc. All sales are exclusively subject to our standard terms of sale posted at www.milliken.com/terms (all additional/different terms are rejected) unless explicitly agreed otherwise in a signed writing. Borchi is a trademark of Borchers Americas.

BGALA-02.03.2025

Milliken