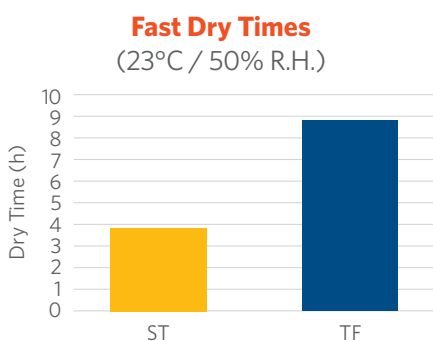


Water Based Wood Care Oil

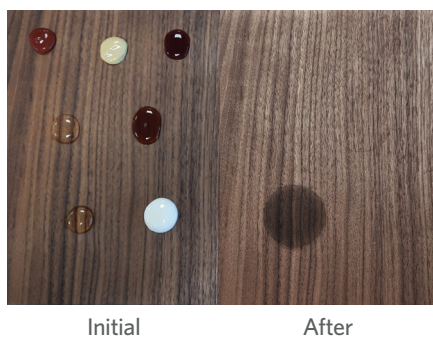
based on a linseed oil emulsion

with Borchⁱ® OXY Coat 1310
& Borchⁱ® Gel A LA



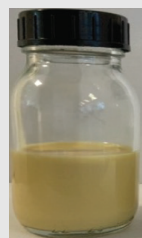
ST - Set to Touch: the paint starts to dry
TF - Tack-Free: the paint is ruptured by the ball

Excellent Chemical Resistance
with Borchⁱ® OXY-Coat 1310



Viscosity Rheometer
(20 °C, at approx. 100 1/s):
approx. 3000 mPa*s
pH-value: 3-10

Water Based Wood Care Oil				
Material		Instruction	Function	Supplier
WorleeKyd RL 1290	73.60	Fully incorporate each ingredient before adding the next material	Resin	Worlee
Boltorn W 3000	7.20		Emulsifier	Perstorp
Deionized Water	11.30		Solvent	
Borch ⁱ ® Gel A LA	2.00		Thickener	Milliken
Borch ⁱ ® OXY-Coat 1310	5.00		Dryer	Milliken
Borch ⁱ ® Gol 1570	0.10		Substrate-Wetting	Milliken
Borch ⁱ ® Gol 3467	0.30		Leveling	Milliken
Acticide MV	0.40		Preservation	Thor GmbH
Ascini ⁿ ® Anti Skin 0445	0.10		Anti-Skinning Additive	Milliken
Total	100.00			



Excellent Stain Resistance
After 2 Hours

	Beech Wood	Oak Wood	Walnut Wood
Ketchup	0	0	0
Mustard	1	0	0
Red Wine	2-3	2	1
Water	0	1	0
Coffee	2-3	1-2	1-2
Hand Cream	1-2	1	0

Rating

0 = no change, 1 = very little change, 2 = little change, 3 = medium change, 4 = strong change, 5 = lacquer layer destroyed

Order your sample at:
www.borchers.com/contact

PLEASE NOTE: As each customer's use of our product may be different, information we provide, including without limitation, recommendations, test results, samples, care/labeling/processing instructions or marketing advice, is provided in good faith but without warranty and without accepting any responsibility/liability. Each customer must test and be responsible for its own specific use, further processing, labeling, marketing, etc. All sales are exclusively subject to our standard terms of sale posted at www.milliken.com/terms (all additional/different terms are rejected) unless explicitly agreed otherwise in a signed writing. Borchⁱ is a trademark of Borchers GmbH.