

Waterborne Styrene Acrylic Coating for General Industrial Applications

with Borch® Performance Additives

Direct-To-Metal Paint Formula

Material	Function	Supplier	Formulation
Deionized Water	Solvent	N/A	5.50
Borchers® AF 1171	Defoamer	Milliken	0.15
Mix Two Materials Below Before Adding			
Deionized Water	Solvent	N/A	0.15
Borch® Gel 0435	Rheology Modifier	Milliken	0.15
Surfynol 104E	Surfactant	Evonik	0.40
AMP-95	Aminomethyl Propanol	Angus	0.20
Borch® Gen 1252	Dispersant	Milliken	0.16
Tiona 595	Titanium Dioxide	Tronox	14.96
Grind to Hegman 7			
Pliotec HDT 12	Resin	Synthomer	64.34
Propylene Glycol	Solvent	Sigma-Aldrich	1.00
Dowanol DPM	Solvent	Sigma-Aldrich	0.80
Dowanol DPnB	Solvent	Sigma-Aldrich	1.20
Optifim Enhancer 400	Coalescent	Eastman	0.50
Mix Two Materials Below Before Adding			
Deionized Water	Solvent	N/A	0.60
Borch® Gel 0625	Rheology Modifier	Milliken	0.10
RAYBO 60 No Rust	Flash Rust Inhibitor	Raybo Chemical	0.75
Deionized Water	Solvent	N/A	8.83
Borch® Gol LA 200	Flow/Leveling/Deaerating	Milliken	0.21
Total			100.00

Performance Additives:

Borchers® AF 1171:

- ✓ VOC-free, silicone based
- Anti-foaming agent and defoamer

Borch® Gel 0435:

- ✓ APEO-free, non-ionic polyurethane based
- High shear HEUR rheology modifier

Borch® Gen 1252:

- ✓ 100% active, VOC-free and APEO-free
- Wetting and dispersing agent

Borch® Gel 0625:

- ✓ VOC- and APEO-free, non-ionic polyurethane based
- Medium shear HEUR rheology modifier

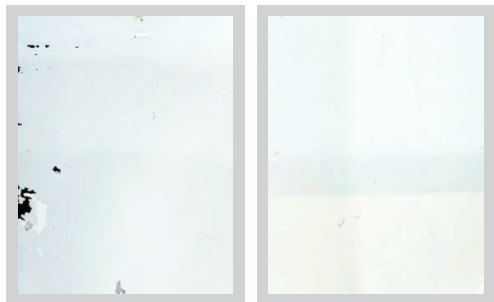
Borch® Gol LA 200:

- ✓ 100% active, VOC-free
- PDMS additive for improved slip, deaeration, substrate wetting, and flow and leveling properties

Formulation Specifications:

Lb/gal: 9.68, VOC (g/L): 82.90, Viscosity: 95-105KU, PVC: 10.88%, NVV: 40.25%, NVM: 48.88%

Improved Blocking Resistance



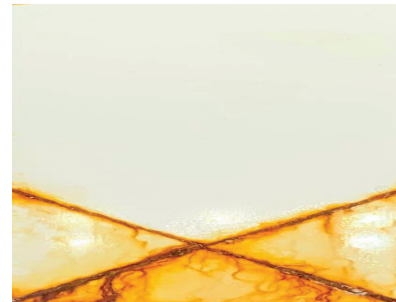
Without Borch® Gol LA 200 With Borch® Gol LA 200
6 mil WFT, 7B Leneta Chart, 24 hour cure, 120°F 1 Hour, 1 kg weight

Good Adhesion Performance



Aluminum Cold Rolled Steel
15 mil WFT, Cured 7 Days, Permacel Tape

Good Corrosion Resistance



ASTM B117 Q-Fog Salt Spray 15 mils WFT, 250 Hours

Order your sample at:
www.borchers.com/contact

PLEASE NOTE: As each customer's use of our product may be different, information we provide, including without limitation, recommendations, test results, samples, care/labeling/processing instructions or marketing advice, is provided in good faith but without warranty and without accepting any responsibility/liability. Each customer must test and be responsible for its own specific use, further processing, labeling, marketing, etc. All sales are exclusively subject to our standard terms of sale posted at www.milliken.com/terms (all additional/different terms are rejected) unless explicitly agreed otherwise in a signed writing. Borch® is a trademark of Borchers Americas. Synaqua is a trademark of Arkema Coating Resins.