

# Post-Addition Additives for Improved Compatibility of Colorants

## Borchi® Add

VOC-free, APEO-free



Enhances compatibility of colorants into many base chemistries, including universal waterborne colorants into solventborne alkyd bases and resin-containing colorants into different base chemistries



WB= Waterborne, SB= Solventborne

### No color difference after brush application



Control

Borchi® Add

Solventborne 2K Long Oil Alkyd  
Iron Oxide Pigment Red 101

### Reduced rub-out



Control

Borchi® Add

Protective & Marine Solventborne 2K Polyurethane  
Pigment Black 7

### Product offerings:

Product	Solids	Systems
Borchi® Add 406WS	90% in Water	Waterborne and Solventborne: 2K Polyurethane, Acrylics, Alkyds, Epoxies
Borchi® Add 409WS	100%	Waterborne and Solventborne: 2K Polyurethane, Acrylics, Alkyds, Epoxies

Dosage: 1-3% active on base paints

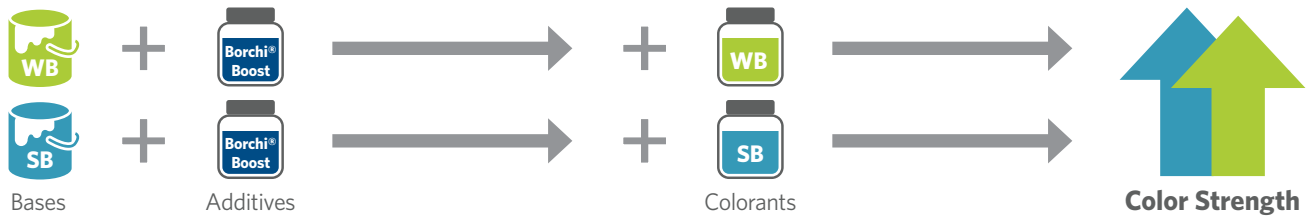
Products can be incorporated as a post-add to the base paint. A ladder study is recommended to determine optimal dosage.

# Post-Addition Additives for Boosting Color Performance

## Borchi® Boost

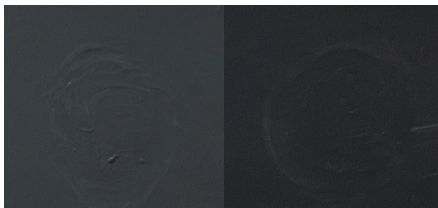
VOC-free, APEO-free

Improved color strength and acceptance for ready-made dispersions or colorants



WB= Waterborne, SB= Solventborne

### Improved color strength



Control

**Borchi® Boost**

Decorative Vinyl Acetate Ethylene Emulsions  
Pigment Black 7

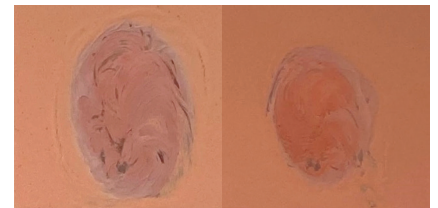


Control

**Borchi® Boost**

Protective & Marine Solventborne 2K Polyurethane  
Magenta - Pigment Red 48:4

### Reduced rub-out



Control

**Borchi® Boost**

Decorative Vinyl Acetate Ethylene Emulsions  
Iron Oxide Pigment Red 101

### Product offerings:

Product	Solids	Systems
<b>Borchi® Boost 510W</b>	50% in Water	Waterborne: 2K Polyurethane, Acrylics
<b>Borchi® Boost 540WS</b>	100%	Solventborne: 2K Polyurethane, Acrylics
<b>Borchi® Boost 570WS</b>	100%	Waterborne and Solventborne: 2K Polyurethane, Alkyds, Epoxies

Dosage: 1-3% active on base paints

Products can be incorporated as a post-add to the base paint. A ladder study is recommended to determine optimal dosage.



For more information, please reach us at [borchers.com/contact](http://borchers.com/contact)

PLEASE NOTE: As each customer's use of our product may be different, information we provide, including without limitation, recommendations, test results, samples, care/labeling/processing instructions or marketing advice, is provided in good faith but without warranty and without accepting any responsibility/liability. Each customer must test and be responsible for its own specific use, further processing, labeling, marketing, etc. All sales are exclusively subject to our standard terms of sale posted at [www.milliken.com/terms](http://www.milliken.com/terms) (all additional/different terms are rejected) unless explicitly agreed otherwise in a signed writing. Borchi is a trademark of Borchers Americas.

ADDBOOST-11.19.24

